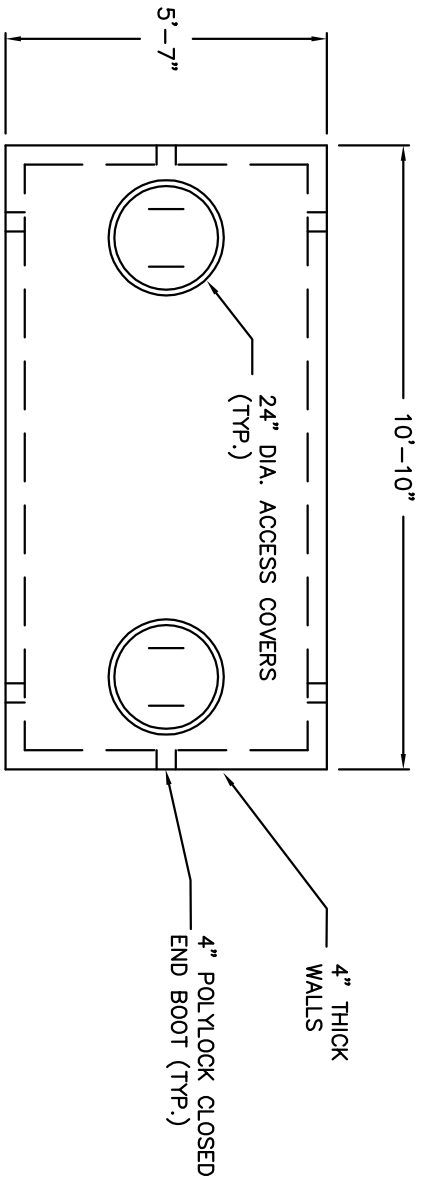


SECTION VIEW
 N.T.S.

- NOTES:
1. CONCRETE: 5,000 PSI MIN. AFTER 28 DAYS
 2. ALL REINFORCEMENT PER ASTM C1227-93
 3. TEES AND GAS BAFFLE SOLD SEPARATELY
 4. TONGUE & GROOVE JOINT SEALED WITH BUTYL RESIN
 5. 4" POLYLOK IV CLOSED END BOOTS USED FOR CONNECTIONS.
 6. PLASTIC RISERS CAN BE POURED INTO COVER
 7. PUMPS & ACCESSORIES OPTIONAL



TOP VIEW
 N.T.S.

100 COACHECO RD.
 FARMINGTON, NH 03835
 OFFICE: (603) 755-2515
 FAX: (603) 278-7878



1250 MONO TANK	
FOR: AJ FOSS 100 COACHECO ROAD FARMINGTON, NH 03835 FAX: (603) 278-7878	DATE: MARCH 23, 2015
	FILE NAME: 1250 MONO
	DRAWN BY: SO