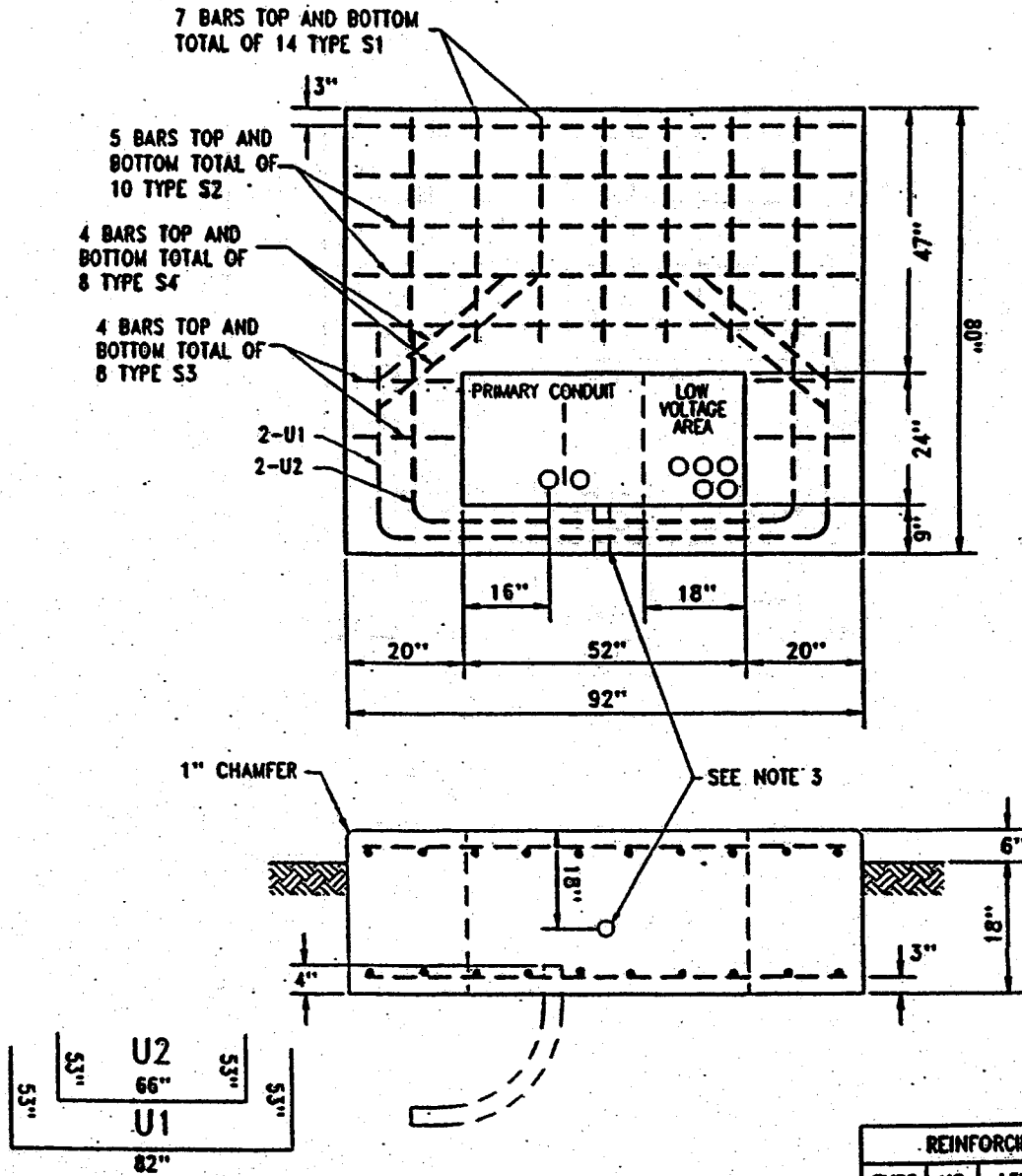


# 3 Ø PADMOUNTED TRANSFORMER SLAB DETAIL 75 TO 500 KVA DEAD FRONT 15 KV AND BELOW

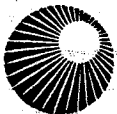
(53)11.1



**NOTES:**

1. SEE PAGE (53) 101 REQUIREMENTS FOR SLAB DETAILS.
2. SEE DTR 56.223 FOR GROUNDING GRID.
3. 1" PVC CONDUIT FOR GROUND LEADS.
4. ALL REBAR TO BE #6.
5. CONDUITS CUT 4" ABOVE SLAB BASE.

REINFORCING SCHEDULE			
TYPE	NO.	LENGTH	TOTAL
S1	14	3'-4"	46'-6"
S2	10	7'-0"	70'-0"
S3	8	1'-3"	10'-0"
S4	8	2'-0"	16'-0"
CONC. VOLUME=3.87 c.y.			



Public Service  
of New Hampshire

## CONSTRUCTION REQUIREMENT

ISSUE	DATE
Original	11/1/83
Rev.	2/1/01