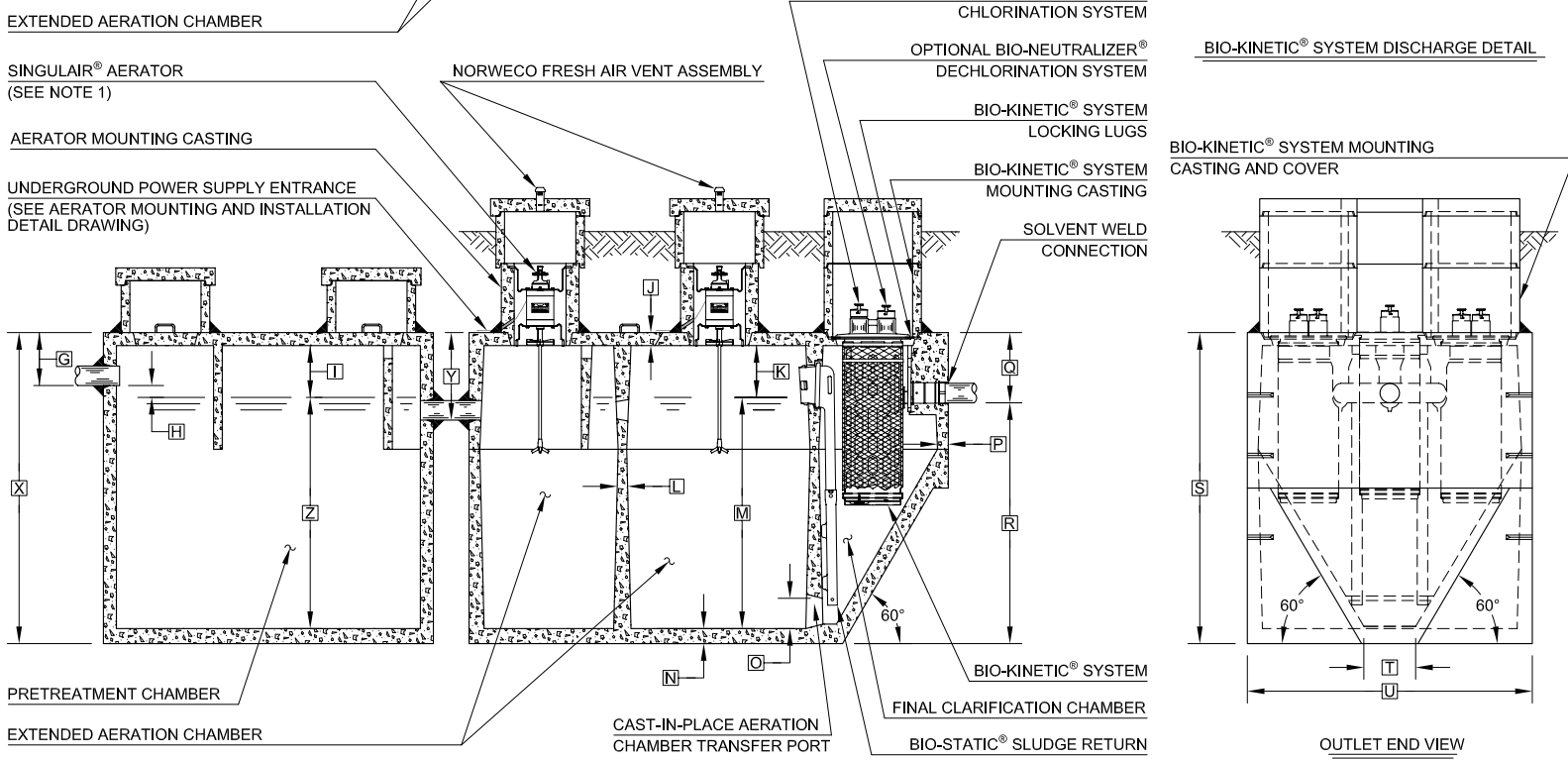


- GENERAL NOTES:**
- ① SINGULAIR® AERATOR, AS TESTED AND ACCEPTED BY NSF.
 - ② FALL THROUGH SINGULAIR® PLANT FROM INLET INVERT TO OUTLET INVERT IS FOUR INCHES. INLET INVERT IS TWELVE INCHES BELOW TANK TOP.
 - ③ ON DEEPER INSTALLATIONS, PRECAST RISERS MUST BE USED TO EXTEND AERATOR MOUNTING CASTING AND BIO-KINETIC® SYSTEM MOUNTING CASTING TO GRADE. INSPECTION COVER ON PRETREATMENT CHAMBER MUST BE DEVELOPED TO WITHIN TWELVE INCHES OF GRADE.
 - ④ TANK REINFORCED PER ACI STD. 318-05.
 - ⑤ REMOVABLE COVERS ON RISERS WEIGH IN EXCESS OF SEVENTY-FIVE POUNDS EACH TO PREVENT UNAUTHORIZED ACCESS.
 - ⑥ CONTACT THE LOCAL, LICENSED SINGULAIR® DISTRIBUTOR FOR ELECTRICAL REQUIREMENTS.



PROJECT ENGINEER'S APPROVAL:
 I (WE) HEREBY CERTIFY THAT THIS DRAWING HAS BEEN CHECKED AND IS APPROVED FOR USE IN CONFORMITY WITH THE CONTRACT DOCUMENTS.

DATE: _____
 NAME: _____

CONTRACTOR'S CERTIFICATION:
 I (WE) HEREBY CERTIFY THAT THIS DRAWING HAS BEEN CHECKED AND IS APPROVED FOR USE IN CONFORMITY WITH THE CONTRACT DOCUMENTS.

DATE: _____
 NAME: _____

CRITICAL DIMENSIONS

A	1'-0"	N	0'-3"
B	2'-9"	O	0'-6"
C	2'-8"	P	0'-2 1/2"
D	3'-7"	Q	1'-4"
E	2'-3"	R	5'-8"
F	9'-3"	S	7'-0"
G	1'-0"	T	1'-0"
H	0'-3"	U	5'-6"
I	1'-0"	V	
J	0'-3"	W	
K	1'-0"	X	
L	0'-2"	Y	1'-8"
M	5'-6"	Z	

NOTE: PRETREATMENT CHAMBER MINIMUM REQUIREMENTS SHALL BE: 1,250 GALLONS CAPACITY, 16 GALLONS PER INCH OF LIQUID LEVEL AND 12 INCHES OF FREEBOARD.

NOTE: SOME CRITICAL DIMENSIONS ARE INTENTIONALLY LEFT BLANK TO BE FILLED IN PER INDIVIDUAL JOB SITE SPECIFICATIONS.

NOTE: TOTAL SYSTEM CAPACITY: 2,850 GALLONS
 RATED CAPACITY: 1,250 GALLONS PER DAY

U.S. AND FOREIGN PATENTS PENDING	norweco	DATE: 1-29-07	REVISION: I
	SINGULAIR® BIO-KINETIC® WASTEWATER TREATMENT SYSTEM MODEL 960 - 1250 GPD	APPROVED BY: GLS	DATE: 3-6-96
© MMVII		SCALE: NTS	PROJECT: PC-5-7009